



MORRRISON COUNTY

AQUATIC INVASIVE SPECIES PREVENTION PLAN

2025



Prepared By
Morrison County
Land Services

www.morrisoncountymn.gov



Table of **CONTENTS**

pg. 3

Introduction

pg. 7

Goals

pg. 15

Implementation

pg. 26

Other Contributions

pg. 27

Resources

pg. 28

Contact Us





INTRODUCTION

Aquatic invasive species (AIS) are threatening Minnesota waters. These nonnative species have the potential to harm fish populations, native aquatic plant communities, water quality, and water recreation. This plan outlines the efforts that Morrison County will undertake to help prevent the spread of harmful AIS within Minnesota.

What?

The Aquatic Invasive Species Prevention Plan was first developed and adopted in 2014 as funds were made available to the County through the Aquatic Species Prevention Aid. The first steps into AIS prevention included ground level education of users of Morrison County's water resources, bolstering the ongoing efforts many lake associations/improvement districts have already undertaken, DNR inspections within Morrison County, and services provided by permitted Lake Service Providers. In following years, efforts remained focused on educating lakeshore owners, those who recreate on our waters, and the youth of our community. In 2016, Morrison County created an AIS Partnership Grant available to lake associations and lake improvement districts to help further their efforts in battling AIS.

Why?

AIS are an emerging issue within Morrison County. Few waters within the County are infested with invasive species at this time, (see page 5) so it is crucial that the County seizes the opportunity to implement prevention strategies to protect their waters. The Comprehensive Water Plan identifies efforts lake associations and lake improvement districts have made to treat invasive species and the importance of that work. Furthering the common objective to protect and manage surface water resources including providing a coordinated effort in fighting AIS.

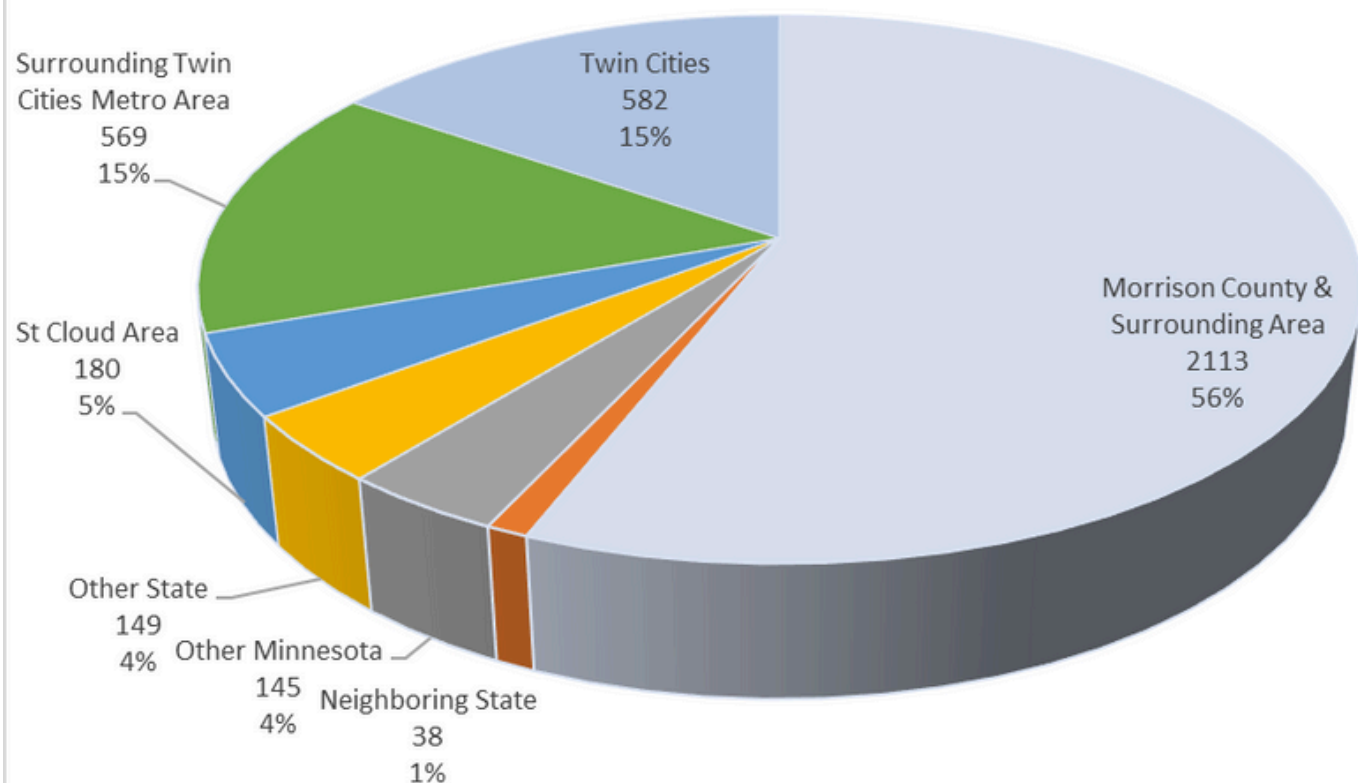
How?

We hope to continue education efforts, make grant money available, and develop additional strategies to create desired AIS prevention behaviors in those people that enjoy the waters within Morrison County.



INTRODUCTORY INFORMATION

Breakdown of Riparian Property Owners in Morrison County
11/19/2024



This chart represents properties that are next to protected lakes in Morrison County, as well as the Mississippi River and Crow Wing River.

In the breakdown, Morrison County and surrounding area are zip codes that begin with 563xx and 564xx. Twin Cities are zip codes that begin with 551xx and 554xx. Surrounding Twin Cities Metro are 550xx and 553xx. St Cloud are parcels with St Cloud, St Augusta, Waite Park, Sartell and Sauk Rapids listed as mailing address city. NOTE** this is not a 100% correct way to categorize but should provide reasonably accurate information.



MN DNR List of Infested Waters in Morrison County

Water	Species	DOW#
Alexander	Eurasian Watermilfoil Zebra Mussel	49-0079
Shamineu	Eurasian Watermilfoil	49-0127
Fish Trap	Zebra Mussel	49-0137
Crookneck	Zebra Mussel Eurasian Watermilfoil	49-0133
Cedar	Zebra Mussel	49-0140
Fish Trap Creek from Fish Trap Lake to Long Prairie River	Zebra Mussel	NA
Crow Wing River Downstream of the confluence with the Long Prairie River to Mississippi River	Zebra Mussel	NA
Crow Wing River from Hwy 87 in Hubbard County downstream to the confluence with Mississippi River, including 500 feet upstream into its tributaries	Faucet Snail	NA
Mississippi River from 500 ft upstream of the mouth of Pine River in Crow Wing County to upper St. Anthony Falls, including 500 ft upstream into tributaries	Zebra Mussel	NA
Long Prairie River including 500 ft upstream into its tributaries	Zebra Mussel	NA



Public Water Accesses in Morrison County

Water Body Name		Map Grid Location	Ramp Type	Fish Species	Administrator
Alexander Lake (West) 		B1	concrete	C, LB, N, S, SB, W	DNR
Alexander Lake (East)		B2	concrete	C, LB, N, S, SB, W	DNR
Cedar Lake		E1	concrete	C, LB, N, S, W	DNR
Crookneck Lake		A1	concrete	C, LB, N, S, W	DNR
CROW WING RIVER	Truck Station	A1	concrete	Various	DNR
	Al-Vah's	A1	concrete	Various	DNR
	Lake Placid Reservoir	A2	concrete	Various	DNR
	Lake Placid Reservoir	A2	fishing pier	Various	DNR
	Wilder's Landing	A2	concrete	Various	DNR
	Sylvan Reservoir	A2	carry in	Various	DNR
	Fisherman's Bank	A2	concrete	Various	DNR
Green Prairie Fish Lake		C2	concrete	C, N, S	DNR
Fish Trap Lake		B1	concrete	C, LB, N, S, W	DNR
Long Lake		B5	earth	C, N, S, W	Township
MISSISSIPPI RIVER	Fort Ripley Landing	B2	concrete	Various	DNR
	Belle Prairie	C2	concrete	Various	County
	Fletcher Creek	C2	concrete	Various	DNR
	Lt. Falls, 4th Av Landing	D2	concrete	Various	City
	Lt. Falls - LeBourget Park	D2	concrete	Various	City
	Little Falls	D2	fishing pier	Various	City
	Lt. Falls below Dam	D2	earth	Various	City
	Pike Creek	D2	concrete	Various	County
	Blanchard Dam	E2	concrete	Various	MPL
	Royalton Sportsman's Club	E2	gravel	Various	Club
	Blanchard Landing	E2	concrete	Various	MPL

Water Body Name	Map Grid Location	Ramp Type	Fish Species	Administrator
Peavy Lake	C5	concrete	LB, N, S, W	DNR
Pierz Lake	D3	concrete	C, LB, N, S, W	DNR
Pine Lake	E1	concrete	C, LB, N, S, W	DNR
Rice Lake	D3	earth	N/A	DNR
Platte River (Co Rd 256)	D3	earth	Various	DNR
Platte River (McGonagle Park)	E3	carry in	Various	City
Round Lake	A1	gravel	Various	DNR
Round Lake	B2	concrete	C, LB, N, S, W	DNR
Round Lake	B4	earth	C, LB, N, S, W	County
Shamaineau Lake (NW)	A1	concrete	C, LB, N, S, W	DNR
Shamaineau Lake (E)	A1	concrete	C, LB, N, S, W	Township
Stanchfield Lake	A1	earth	N, W	DNR
Sullivan Lake (E)	B5	concrete	C, LB, N, S, W	DNR
Sullivan Lake (W)	B5	gravel	C, LB, N, S, W	Township



Administrator: DNR - MN Dept. of Natural Resources
MPL - Minnesota Power and Light

Fish Species: C — Crappie, LB — Largemouth Bass, N — Northern Pike,
S — Sunfish, SB — Smallmouth Bass, W — Walleye,
N/A — Not Available

Above is a chart of the public water accesses in Morrison County.

Linked is the source page this chart was taken from. This also contains a map that gives a visual representation along with locations and further information.

http://files.dnr.state.mn.us/maps/water_access/counties/morrison.pdf

GOALS

Below are the actions Morrison County plans to implement in order to prevent the spread of AIS including many elements contained within the state plan. In the following table, where applicable, related actions and elements from the state plan are cross-referenced. The MN Invasive Species Plan can be found here: https://files.dnr.state.mn.us/natural_resources/invasives/state_invasive_species_plan.pdf

Goal	How this goal supports AIS prevention	Element: action in state plan
------	---------------------------------------	-------------------------------

Assess the county's resources and risk of AIS introduction

1.

Educate County staff to understand the variety of pathways of introduction to local waters.

Knowing the common pathways by which AIS can be spread is essential to effective prevention and education.

Prevention – Understand Risks; **I-1-c**

2.

Using MNDNR's list of water bodies that are designated as infested in the county, identify linkages to other water bodies.

Some AIS may travel or be more easily transported between infested waters and other connected water bodies; knowing these linkages will help prioritize prevention and education resources.

Prevention – Understand Risks; **I-1-c**

GOALS

Goal

How this goal supports AIS prevention

Element: Action in state plan

Increase public awareness and participation in prevention

3.

Develop informal education materials for events such as the water festival to support youth education about AIS.

Young people can help prevent the spread of AIS through their own actions and by modeling their knowledge and actions to their families.

Prevention – Public Awareness; **1-8-g**

4.

Explore partnership opportunities with existing outreach efforts developed by the MNDNR and the Minnesota Sea Grant Program.

Leveraging existing communications materials ensures that the public receives accurate messages about rules and best practices related to AIS prevention.

Early Detection, Rapid Response, and Containment – Public Awareness; **II-8-d**

5.

Develop tailored messages aimed at lake-related businesses (e.g. home builders, developers, resorts) regarding AIS prevention.

Ensuring that individuals are aware of AIS prevention measures that they can take in the course of their daily work will help to reduce the risk of AIS spread.

Early Detection, Rapid Response, and Containment – Public Awareness; **II-8-f**

GOALS

Increase public awareness and participation in prevention

6.

Assist with funding local outreach and monitoring efforts by entities other than the county.

Overall AIS prevention efforts can be strengthened by supporting the capacity of other local organizations to conduct AIS outreach and monitoring activities.

Early Detection, Rapid Response, and Containment – Detection; **II-1-h**

7.

Coordinate with the MNDNR to publicize new infestations at access sites, in lake association newsletters, and other local publications.

Timely and accurate notice of new AIS infestations empowers the public to help prevent the further spread of AIS.

Early Detection, Rapid Response, and Containment – Public Awareness; **II-8-i**
Early Detection, Rapid Response, and Containment – Risk Reduction; **II-15-c**

8.

Collaborate with other counties, watershed groups, or jurisdictions whose water bodies connect to the counties to develop a regional education campaign.

Because AIS and the individuals who could transport them do not stay inside county borders, effective coordination is necessary to prevent AIS spread.

Prevention – Regional Approaches; **I-9-a**



GOALS



Increase public awareness and participation in prevention

9.

Develop and distribute AIS prevention messages targeting riparian landowners who launch watercraft from their own private residential access

Many watercraft enter lakes and rivers from private residential property and are not reached by education and prevention efforts directed at public accesses and cooperating private non-residential accesses

Prevention – Public Awareness; **I-8-a & e**

GOALS

Goal

How this goal supports AIS prevention

Element: Action in state plan

Increase available resources and leverage partnerships

10.

Develop and maintain contacts with other local organizations, businesses, and government entities.

The participation of local partners is necessary for a county's AIS prevention plan to be effective.

Leadership and Coordination - Local;
IV-3-a

11.

Establish a grant program to support local efforts to prevent the spread of AIS.

By leveraging existing capacity of other local organizations, the county can maximize the effectiveness of its AIS prevention funds.

Leadership and Coordination - Local;
IV-3-c

GOALS

Goal

How this goal supports AIS prevention

Element: Action in state plan

Broaden knowledge of and participation in early detection and rapid response activities

12.

Obtain and distribute Watch ID cards from the Minnesota Sea Grant Program.

Finding new infestations of AIS early is key to preventing further spread, and ensuring that many people who use water resources know what AIS to look for maximizes the chance of early detection.

Early Detection, Rapid Response, and Containment – Detection;
II-1-b

13.

Encourage county staff, businesses, and individuals to submit samples of suspected AIS to the MNDNR.

The county can support early detection and prevention efforts by helping the MNDNR to quickly confirm new infestations of AIS.

Early Detection, Rapid Response, and Containment – Detection
II-1-d

14.

Cultivate partnerships with organizations interested in AIS prevention to support AIS surveys in water bodies (infested and non-infested) and on docks and lifts.

Leveraging the resources of existing organizations will help to find new AIS infestations more efficiently and to prevent further spread of those AIS.

Early Detection, Rapid Response, and Containment – Prioritize;
II-3-b

GOALS

Goal

How this goal supports AIS prevention

Element: Action in state plan

Management of Invasive Species

15.

Reduce the negative impacts of AIS by managing their populations through risk assessment, prioritization, implementing management strategies, evaluating success, and restoring native species where applicable.

Invasive species can cause economic and environmental harm and negatively impact the way we are able to utilize our natural resources. Managing AIS in waterbodies that are experiencing impacts will improve our resources.

Management of Invasive Species; **III-1, 2, 6, 8**



IMPLEMENTATION

Overview

Our current and future projects and what goals they achieve

AIS Grant Program.....Goals:

- Increase public awareness and participation in prevention.
- Increase available resources and leverage partnerships.
- Broaden knowledge of and participation in early detection and rapid response activities
- Management of Invasive Species

Water Festival.....Goals:

- Increase public awareness and participation in prevention.
- Broaden knowledge of and participation in early detection and rapid response activities

Aqua Weed Stick Project.....Goals:

- Increase public awareness and participation in prevention.
- Broaden knowledge of and participation in early detection and rapid response activities
- Management of Invasive Species

Public Outreach.....Goals:

- Increase public awareness and participation in prevention.
- Broaden knowledge of and participation in early detection and rapid response activities



IMPLEMENTATION

Overview

Our current and future projects and what goals they achieve

Veliger Sampling.....Goals:

- Increase public awareness and participation in prevention.
- Broaden knowledge of and participation in early detection and rapid response activities

Settling Plates.....Goals:

- Increase public awareness and participation in prevention.
- Broaden knowledge of and participation in early detection and rapid response activities

CD3 Machine.....Goals:

- Increase public awareness and participation in prevention.
- Broaden knowledge of and participation in early detection and rapid response activities
- Increase available resources and leverage partnerships

MN Traditions.....Goals:

- Increase public awareness and participation in prevention.
- Broaden knowledge of and participation in early detection and rapid response activities
- Increase available resources and leverage partnerships

Watercraft Inspectors & Ambassadors -Goals:

- Increase public awareness and participation in prevention.
- Broaden knowledge of and participation in early detection and rapid response activities
- Increase available resources and leverage partnerships



IMPLEMENTATION

County Grant Program

About the Project

Since 2016, the grant project has allocated \$50,000 per year towards the AIS prevention program. The money is granted to lake associations or lake improvement districts to further their goals in AIS management based on their individually identified AIS needs.



Project Data

Since 2016, over **419,000 dollars** has been awarded to local organizations to further their AIS goals. From this program lake groups have:

- Hired professionals to perform lake plant inventories.
- Managed AIS through chemical treatments and hand harvesting.
- Created and installed zebra mussel settling plates
- Created an ambassador program on two lakes to have a physical presence at lake access.
- Installed brochures & maps at local lake landings
- Mailed AIS information to lake owners.
- Installed signage at lake landings.

IMPLEMENTATION

Water Festival

About the Project

The Water festival is an annual event that Morrison County SWCD holds at Camp Ripley. The main goal of this event is to educate 6th graders of the and appreciation to the life that inhabits lakes and rivers and the importance of conserving it. This event provides students a chance to get hands on experience with multiple presentations and stations that vary by year. The youth education aids in developing an interest and appreciation of the water resources around them.



Wanted!

Dead or Alive



Last seen in Lake Alexander, Fish Trap Lake, Crookneck Lake, and the Mississippi River



This invasive species is know to cut feet of innocent swimmers walking along the shoreline and clog up and gather on pipes, docks, and lifts.

What We DO

Each year the Morrison County AIS Program provides education about AIS to attendees and provides a t-shirt with an AIS message.

Part of the presentation is through the use of posters (example pictured left).



IMPLEMENTATION

Water Festival



Images of AIS Station

- A- Boat with fake weeds placed in and on it to let children look for common places to find AIS.
- B. Children receiving a briefing on how to care for a boat and gear.
- C. T-shirt design from 2024



A



B



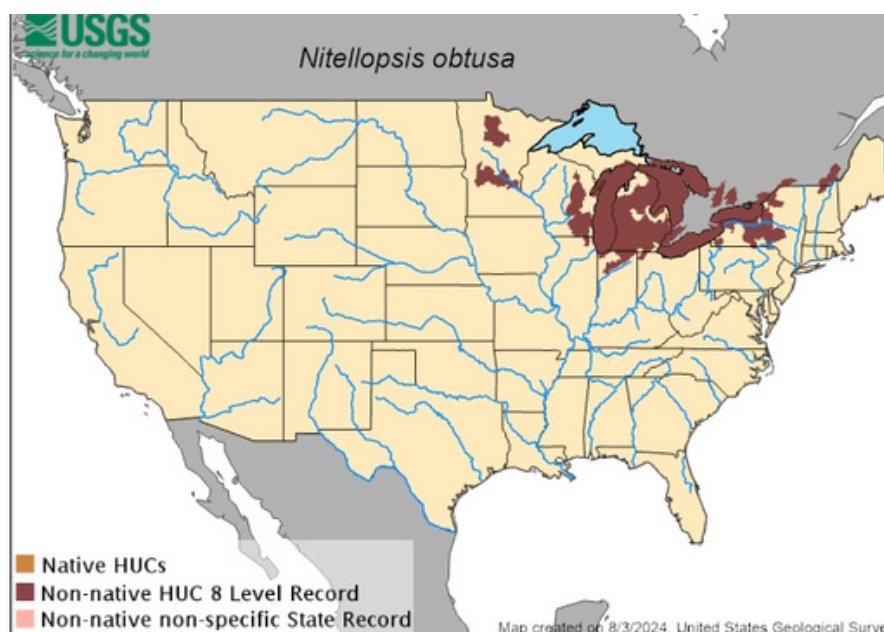
C

IMPLEMENTATION

Starry Trek

About the Project

Since 2017, Morrison County residents have occasionally participated in the Starry Trek. This is an annual event sponsored by the University of MN. The state-wide effort utilizes volunteers to search for Starry Stonewort along with any other invasive species. Each year, hundreds of volunteers from around the state gather at rendezvous sites and learn how to ID *Nitellopsis Obtusa*, also known as Starry Stonewort and other invasive species.



www.StarryTrek.org

IMPLEMENTATION

Aqua Weed Stick Project



About the Project

The Aqua Weed Stick (AWS) is a Minnesota based product that is designed for the easy removal of weeds, milfoil and aquatic invasive species from boat trailers, personal watercraft trailers, docks and boat lifts. Morrison County plans on continuing the distribution of this product to the public through giveaways and demos at educational events, recreational areas, inspections, and other “lake meetings”.



Distribution Data

Where	How Many
Staff Use	12
Sullivan LID	30
Shamaineau LID	28
Staff distributed at Fish Trap LA Meeting	25
Staff distributed at Alexander LA Meeting	20
Local school fishing team	9
Alexander	55
Crookneck	9
Pine Lake	1
Sullivan	15
Platte	1
Mississippi River (multiple accesses)	12
Fish Trap Lake	17
Pierz Fish Lake	6
Green Prairie Fish Lake	10

IMPLEMENTATION

Watercraft Ambassadors

About the Project

Since 2016, dollars have been awarded to lake improvement districts to employ ambassadors. These individuals attend the required training from the DNR and provide inspections and data collection at local lake accesses. These ambassadors look for drain plugs being pulled, weeds on boats entering and leaving the water, etc.



A

Project Data

These dollars provided for 11,200 hours of access coverage from May -October on two lakes. About 1,700 boats were looked at entering or leaving the water in the 2024 season.



B

A- trailer after launching a boat that needs the weeds removed.

B- A lake ambassador speaking to a boater before launching (Source: Green Prairie Lake Association)

IMPLEMENTATION

Public Outreach

About the Project

Land Services typically has AIS items on hand to give the public for outreach purposes. Items such as coozies and coasters were available at the county fair and Halloween events with the goal of introducing information and spreading AIS awareness to recipients. In the past, local lakeside restaurants were given posters and coasters to put up/give to customers. This year the items given away are boat towels, fridge magnets, plastic tools for unscrewing boat plugs, and informational pamphlets.



IMPLEMENTATION

Landing Informational Station

About the Project

In 2024, Land Services partnered with Public Works to install informational stations at Pike Creek and Belle Prairie Park landings on the Mississippi River. Currently, these stations are equipped with multiple informational signs, a QR code that leads to the shoreland page on the Morrison County website, and a retractable aqua weed stick for public use. The goal of this project is to provide a more immersive and visually appealing kiosk for patrons to view and interact with. The locations were chosen due to their popularity with the public and the orientation of the landing funneling vehicles to a particular area after loading watercrafts. The photos shown are a pilot-project with plans for further development and more locations in the future.



Belle Prairie Landing Station



Landing at Pike Creek



IMPLEMENTATION

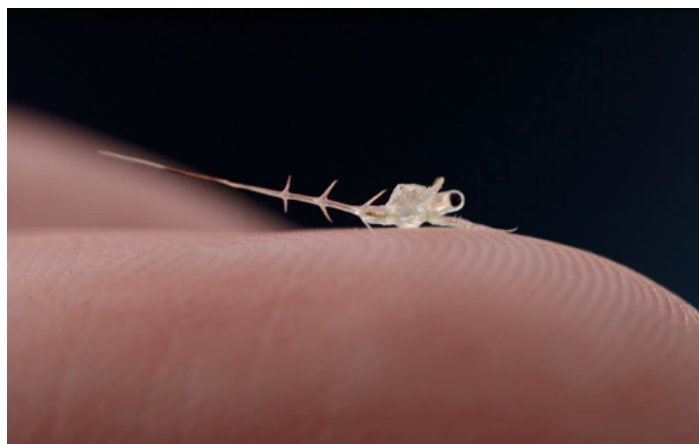
Veliger Sampling



About the Project

Since 2017, Morrison County has partnered with lake landowner volunteers to do early detection sampling for zebra mussel larva (veliger) and Spiny Water Flee within the major lakes in the county. Early detection of veligers provides the best opportunity to identify zebra mussel infestation. Samples are collected from specific points on the lake by gathering lake water in a net, pouring the sample into a bottle, and sending samples to an environmental lab to be tested. After tests, each lake is given a report of the results.

Spiny Water Flee Below



Source: University of MN AISRC



Veliger sampling: Photo from Green Prairie Lake Association

Project Data

Results have changed throughout the years as more lakes have been infested with zebra mussels. As of the 2024 sampling results, the presence of Zebra Mussel veligers have been found in Fish Trap, and Alexander. Shamineau, Placid, Cedar, Sylvan, Sullivan, and Platte are high risk. Lakes such as Pierz, Pine, Peavy, Long, Pelkey, Michaels, and Twelve have the lowest infestation risk ratings, while all others lie somewhere in between with a moderate rating due to proximity to other infested waters and/or amount of public use.

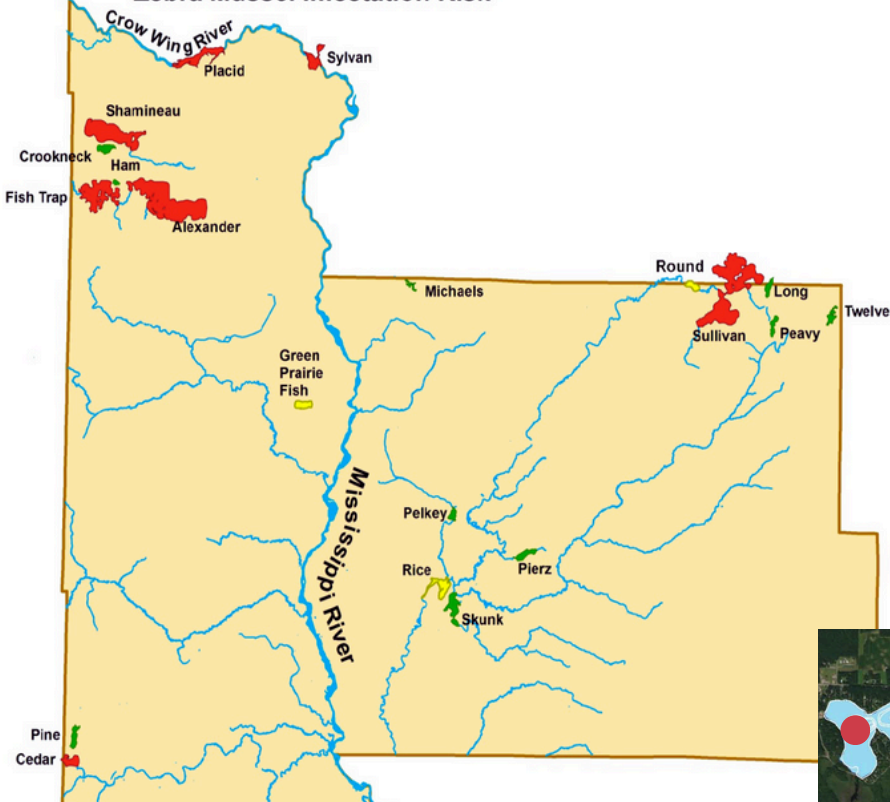


IMPLEMENTATION

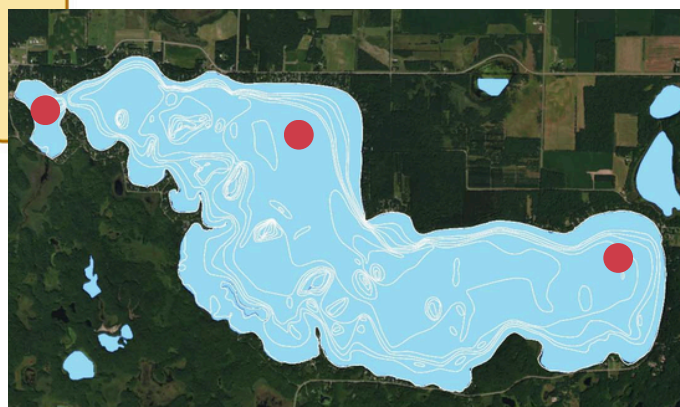
Veliger Sampling

Morrison County

Zebra Mussel Infestation Risk



Water bodies are assessed on the basis of amount of boat units/ public use, connectivity to other water bodies upstream, flow rate, amount of vegetation, water temperature and chemical/habitat suitability for zebra mussels. Red represents high risk, yellow represents moderate risk, and green low risk.



Sampling locations example



Map showing lakes that sampled are collected: Alexander, Crookneck, Fish Trap, Green Prairie, Long, Peavy, Pierz, Pine, Cedar, Platte, Shamaineau, Sullivan

IMPLEMENTATION

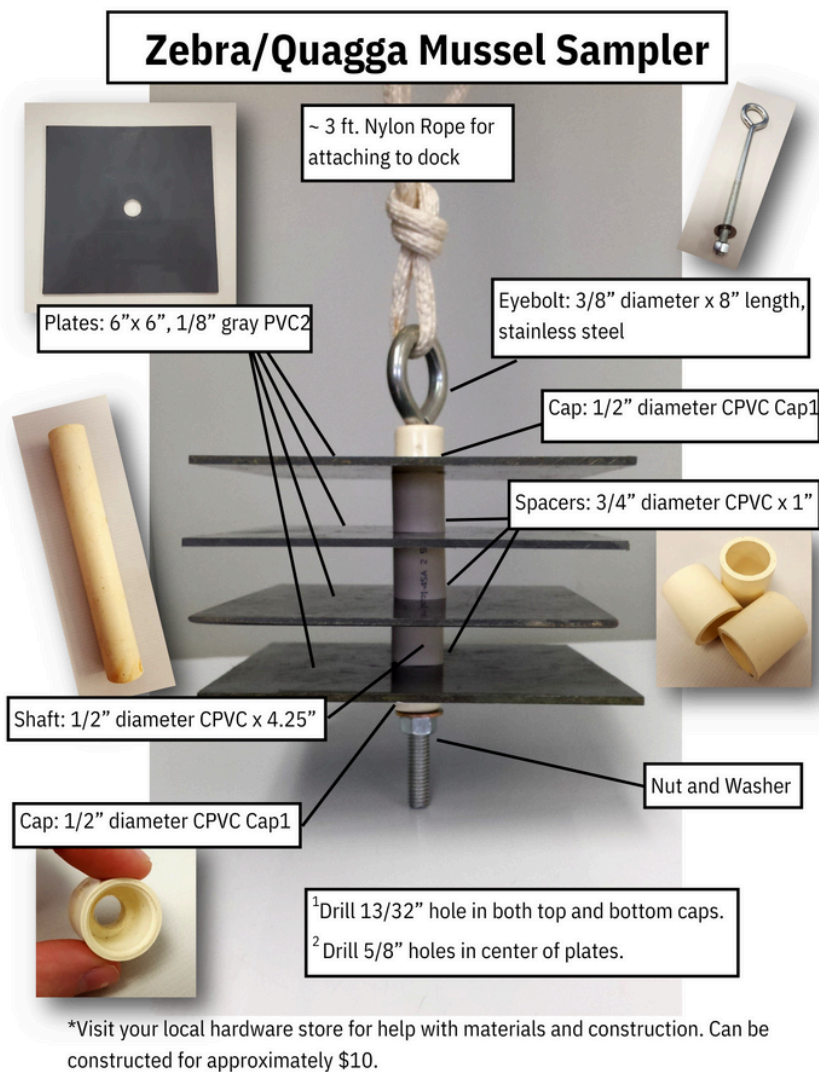
Settling Plates

About the Project

Building off the philosophy that early detection provides the best opportunity to prevent the spread of zebra mussels, another method of early detection is offered to volunteers, to which equipment and training is provided. Zebra mussel settlement samplers. These provide surfaces on which zebra mussels will settle after they complete their veliger stage.

Procedure Data

The settling plates are placed in lakes between May and September, near the bottom of the lake. They can be near shore or in open water as long as they are shaded part of the day and the location is consistent. The plates should be checked monthly.



Instructions on building a zebra mussel settlement sampler from MN DNR website.

Project Data

Five lakes in Morrison County have settling plate programs that annually monitor for zebra mussels. The grant program has funded lake associations to create a network of volunteers to provide results to the county.

IMPLEMENTATION

CD3 Machine

About the Project

This was a partnership with the Fish Trap Lake Association to install at the lakes only access. CD3 Systems are waterless, boater-operated, and provide the tools to empower boaters to clean, drain, and dry their watercraft & trailer. This unit has been in use since 2020. Tools provided include: wet/dry vacuum, air blower, tethered hand tools, and LED lights.



Public Use Data (2024)

Type of Use	Amount of Use
Air Uses	737
Brush Uses	455
Light Uses	2146
Plug Wrench Uses	293
Reach Grabber used	408
Vacuum Uses	2006*

*There was an issue reported with the vacuum, that was repaired, that may lead to a larger usage reported than the actual usage.

IMPLEMENTATION

MN Traditions

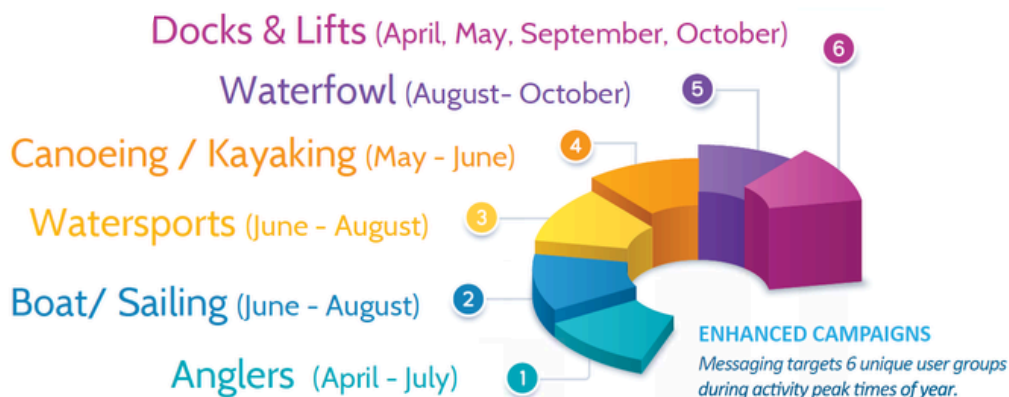
About the Project

MN traditions is a multi-county social media campaign launched in 2016 by the Mississippi Headwaters Board. MN Traditions is geared around shifting the perspective, and in turn attitude, of Minnesotans along with focusing on educating youth and citizen engagement on preventing the spread of AIS. There is a page on Facebook, Instagram and Twitter. The campaign targets people based on geography and water geared interests.



Engagement Data

These accounts were launched in 2016 with zero follows and have since grew to over 45,000 on Facebook and over 10,000 on twitter. Instagram was launched in 2020 and has over 400 followers. At this point in the following, posts are reaching far beyond the target audience in magnitudes of the hundred thousand.



CONTRIBUTIONS

Other Government Spending

MN DNR Statewide Inspection Program

The MN DNR hires staff every summer to perform level 1 and level 2 inspections. The DNR aims to hire 46 Level 1 Watercraft Inspector Interns who will be trained to inspect watercraft and 46 Level 2 Watercraft Inspectors who will be trained to inspect and decontaminate watercraft. The DNR has 26 staffed decontamination units and will continue to use them at high-use, zebra mussel infested waters. The DNR uses a tier system to determine how many hours of inspection and decontamination accesses throughout the state receive. (MN DNR Website)



Boat decontamination being performed. (Source: Dakota County)

Local Dollar Spending

Every year county grant dollars are used to help several lake improvement districts with their AIS management activities. The grant does not cover all of the expenses of the management practices, and thousands of dollars in addition to our local and state grants are spent on AIS management by local lake improvement districts and lake associations.

RESOURCES

Permitted Lake Service Providers in Morrison County (Source: MN DNR 12/15/2024)

City	Business	Personnel	Phone
------	----------	-----------	-------

Cushing	KS Dock & Lift/Action Dock	Kyle Kalis	218-575-2442
---------	----------------------------	------------	--------------

Cushing	Staples Sports	Greg Hanson	218-575-2086
---------	----------------	-------------	--------------

Cushing	Sweetwater Resort	Cindy Brey	218-575-2744
---------	-------------------	------------	--------------

Hillman	Blocks Docks & More	T.J. Block	320-630-5059
---------	---------------------	------------	--------------

Little Falls	Boaters Dream	Brandon Marcyes	320-632-8152
--------------	---------------	-----------------	--------------

Little Falls	Shirly Mae's Outfitters	John Carpenter	320-414-0382
--------------	-------------------------	----------------	--------------

Motley	Shamaineau Acres Resort	Lynden Cater	218-575-2254
--------	-------------------------	--------------	--------------

Pierz	AJ's Dock Services	Andy Janson	320-630-0654
-------	--------------------	-------------	--------------

Pierz	Kolton's Dock/lift	Kolton Eischens	320-237-2890
-------	--------------------	-----------------	--------------

Pierz	Ted Stamm Repair	Theodor Stamm	320-630-9097
-------	------------------	---------------	--------------

Motley	John's Lawn Care	John Jacklitch	218-838-4436
--------	------------------	----------------	--------------

Cushing	Backwater Rentals & Adventure	Ashley Hanson-Dumprope	218-838-7622
---------	-------------------------------	------------------------	--------------

Pierz	Johnson Dock Service	Ryan Johnson	320-7330794
-------	----------------------	--------------	-------------

Royalton	A & A Dock and Lift	Adam Hellickson	320-584-8056
----------	---------------------	-----------------	--------------

Reference

MNDNR interactive map of infested waters

MNDNR Lakefinder

U of M AIS center

Link:





Contact us



[320-632-0170](tel:320-632-0170)



<https://www.morrisoncountymn.gov>



[213 - 1st Avenue SE Little Falls, MN 56345](#)



**Morrison
County**



MORRRISON COUNTY

Plan Adoption

Adopted January 28, 2025

Mike LeMieur
Board Chair
Morrison County Board of Commissioners

Matt LeBlanc
County Administrator